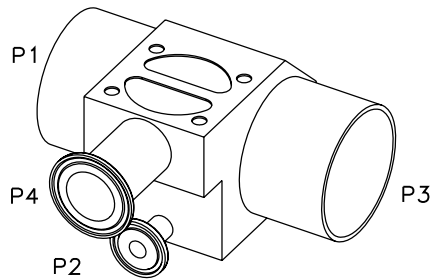
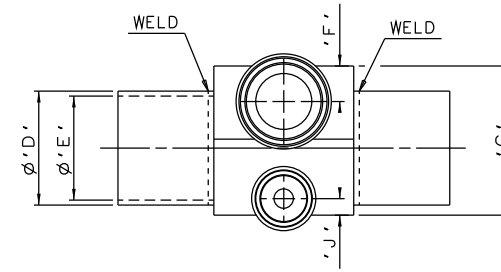
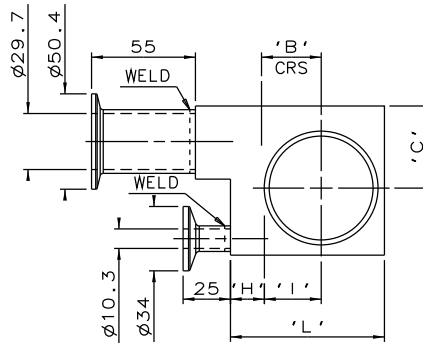
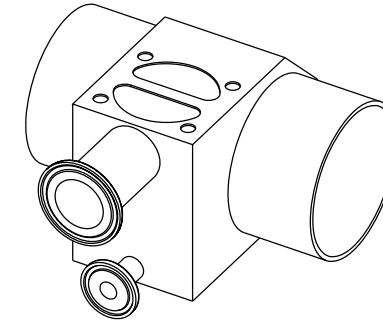
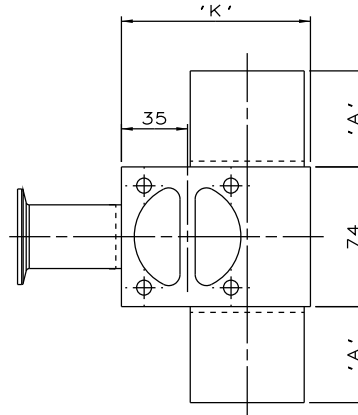


DN25 TO DN50  
MAINLINE ONLY

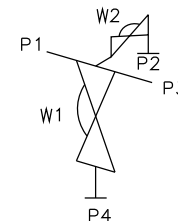


DN65 AND DN100  
MAINLINE ONLY



DN80 MAINLINE ONLY

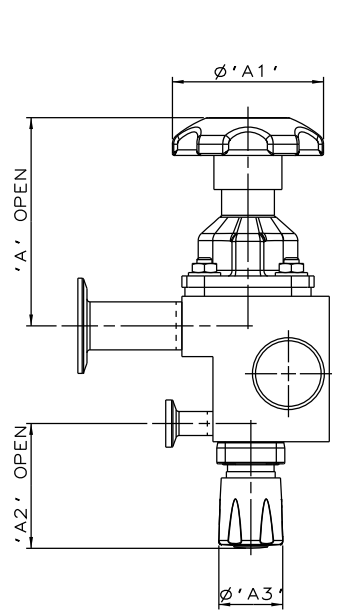
MAINLINE SIZE	A	B	C	øD	øE	F	G	H	I	J	K	L	BODY WEIGHT
mm	mm	mm	mm	mm	mm	mm	mm	mm	mm	mm	mm	mm	Kgs
DN25	50.8	18.9	39.5	33.7	29.7	18.9	79.0	18.0	17.4	8.8	74.3	55.8	2.5
DN32	50.8	23.2	39.5	42.4	38.4	18.9	79.0	18.0	17.4	8.8	83.0	64.5	2.6
DN40	50.8	26.2	39.5	48.3	44.3	19.9	79.0	18.5	24.7	9.8	88.3	70.3	2.7
DN50	50.8	31.6	43.5	60.3	55.1	18.9	79.0	18.0	30.1	8.8	100.0	81.5	2.9
DN65	50.8	39.5	49.0	76.1	70.9	18.9	90.1	18.0	38.0	8.8	115.5	97.0	3.0
DN80	50.8	45.9	53.0	88.9	83.7	18.9	100.5	36.5	44.4	8.5	128.3	N/A	4.0
DN100	101.6	58.6	61.0	114.3	109.1	18.9	125.0	18.0	57.1	8.8	154.0	135.5	5.1



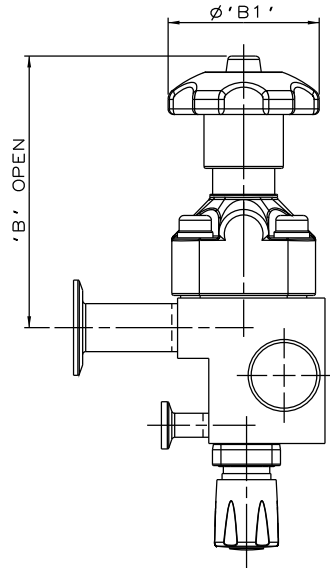
ORIENTATION AS  
PER P&ID DIAGRAM  
FOR OPTIMUM  
DRAINABILITY.

The information on this sheet is Private and Confidential and is the property of Crane Process Flow Technologies Limited and must not be published directly or indirectly in any manner whatsoever without the written permission of the Company and must not be used in any way detrimental to their interests.  
© Crane Process Flow Technologies

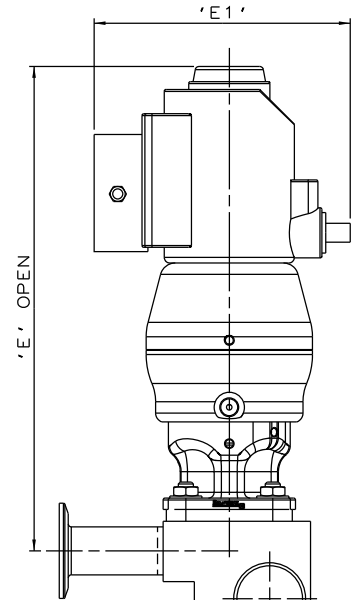
<b>CRANE</b>	Process Flow Technologies A Crane Co. Company	<b>Saunders</b> The Science Inside	
Title SCHEDULE OF LEADING DIMENSIONS FOR DN25 WEIR *T* BODY WITH DNB BACK SAMPLE COMPLETE WITH : MAINLINE : BUTT WELD ISO 1127 S1 TUBE ENDS BRANCH : HYGIENIC CLAMP END WITH ISO 1127 S1 BORE SAMPLE : HYGIENIC CLAMP END WITH ISO 1127 S1 BORE			
Drawn RI	Date 25.05.12	UNCONTROLLED IN HARD COPY FORMAT	
Checked RND	Date 25.05.12		
First Angle Projection Method E		DO NOT SCALE	Drawing No. WEB-225
			Issue. 1



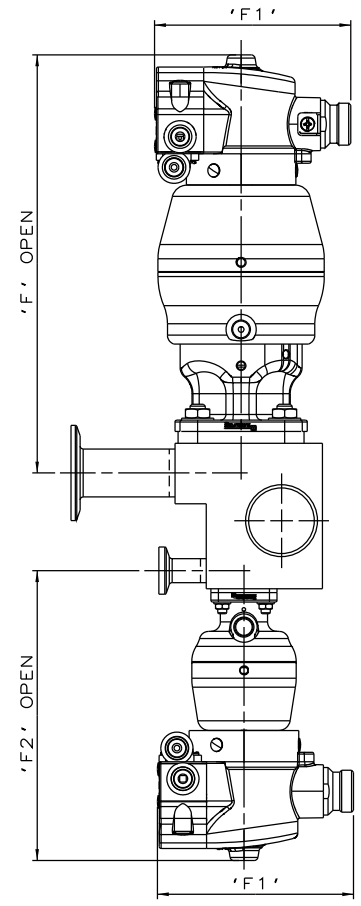
SS NON SEALED  
& PURE PERFORMANCE  
BONNET ASSEMBLY



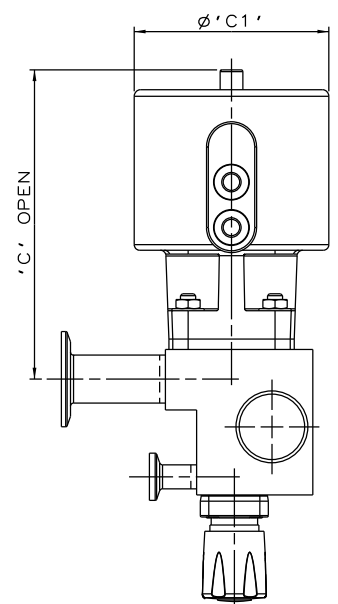
PES BONNET ASSEMBLY  
& PURE PERFORMANCE  
BONNET ASSEMBLY



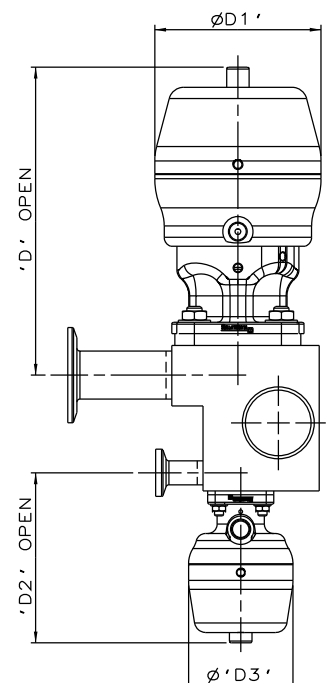
\*S360 ACTUATORS  
WITH M-VUE SENSOR



\*S360 ACTUATORS  
WITH I-VUE SENSOR



EC ACTUATOR (ALL MODES)  
& PURE PERFORMANCE  
BONNET ASSEMBLY



\*S360 ACTUATORS

BLOCK CAN BE FITTED WITH ANY EXISTING  
SUITABLE TOP WORK COMBINATIONS

The information on this sheet is Private and Confidential and is the property of Crane Process Flow Technologies Limited and must not be published directly or indirectly in any manner, whatsoever without the written permission of the Company and must not be used in any way detrimental to their interests.  
© Crane Process Flow Technologies

<b>CRANE</b>	Process Flow Technologies	<b>Saunders</b> The Science Inside
	A Crane Co. Company	

Title  
SCHEDULE OF LEADING DIMENSIONS FOR DN25/1.00  
WEIR 'T' BODY WITH DN8/0.25 BACK SAMPLE WITH MAINLINE  
BUTT WELD ISO 1127 S1 TUBE ENDS, BRANCH AND SAMPLE  
HYGIENIC CLAMP ENDS WITH ISO 1127 S1 BORE.  
FITTED WITH TOPWORKS OPTIONS

Drawn R1	Date 09.05.17	UNCONTROLLED IN HARD COPY FORMAT
Checked RND	Date 09.05.17	

First Angle Projection Method E	DO NOT SCALE	Drawing No. WEB-225-ASSY	Issue. 1
---------------------------------------	--------------------	-----------------------------	-------------

\* DIMENSIONS SHOW MAXIMUM ENVELOPE FOR ALL MODES

BRANCH / SAMPLE SIZE		A		A1		A2		A3		B		B1		C		C1		D		D1		D2		D3		E		E1		E2		F		F1		F2	
mm	inch	mm	inch	mm	inch	mm	inch	mm	inch	mm	inch	mm	inch	mm	inch	mm	inch	mm	inch	mm	inch	mm	inch	mm	inch	mm	inch	mm	inch	mm	inch	mm	inch	mm	inch	mm	inch
DN25xDN15	1.00x0.50	113.9	4.48	80.0	3.15	66.2	2.61	34.0	1.34	147.9	5.82	80.0	3.15	167.9	6.61	103.0	4.05	175.9	6.93	98.0	3.87	89.8	3.54	55.0	2.18	272.9	10.74	136.0	5.35	188.8	7.43	236.9	9.33	103.8	4.09	154.8	6.09